



























SOFT SELF PORTRAIT



A. Dürer, *Portrait of Martin Schenck*
1500, oil on copper, Berlin, Staatliche Museen
Preussischer Kulturbesitz, Gemäldegalerie
Königliche Museen, Berlin

1500
A

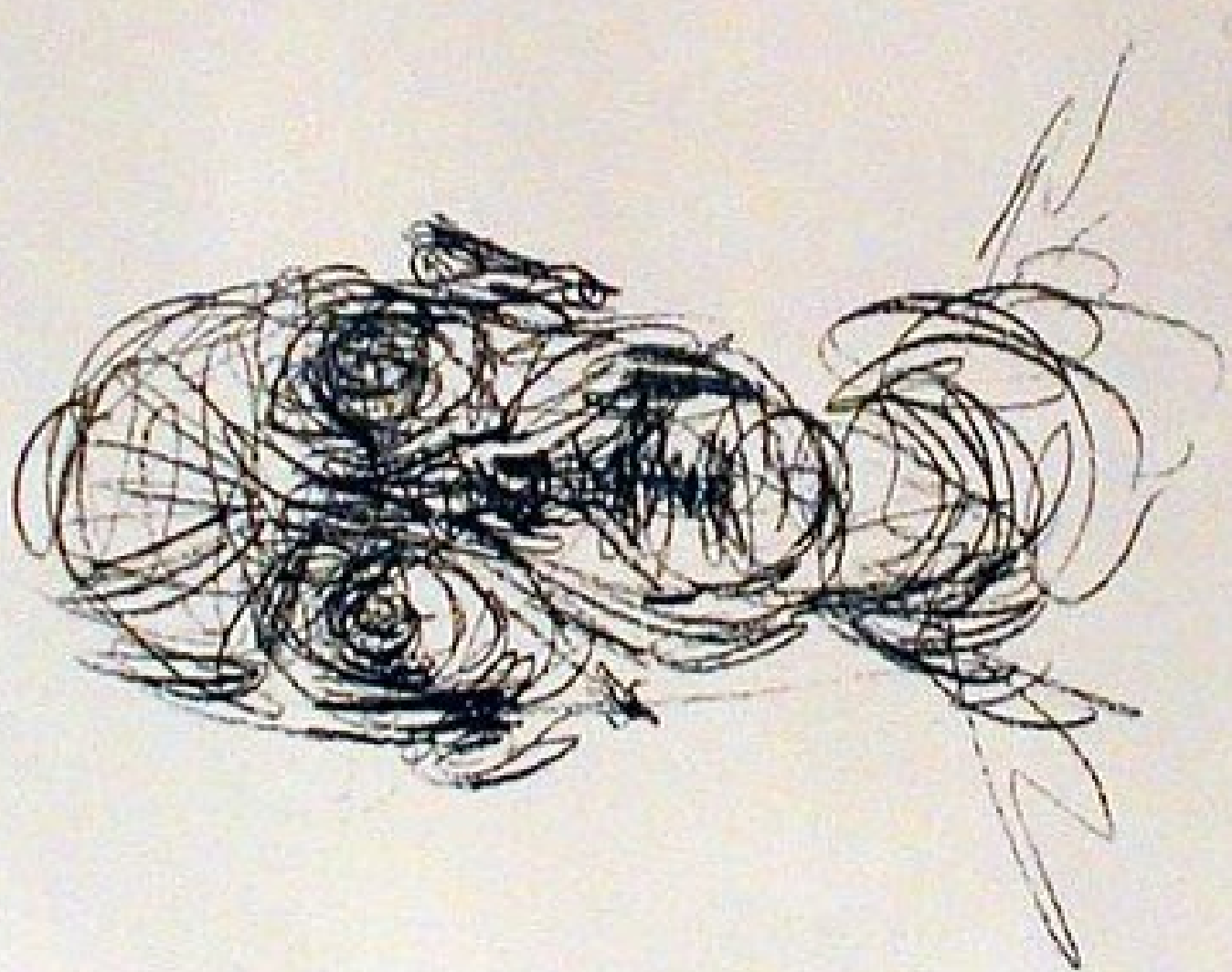


























• ANNO • ETATIS •

• SVE • XLIX •









* LETRESVICTORIAEX ROY TE FRAMIE *



* CHARLES SEPTIESME TE DE NOM *











collection S. D.

LOUIS XIII.













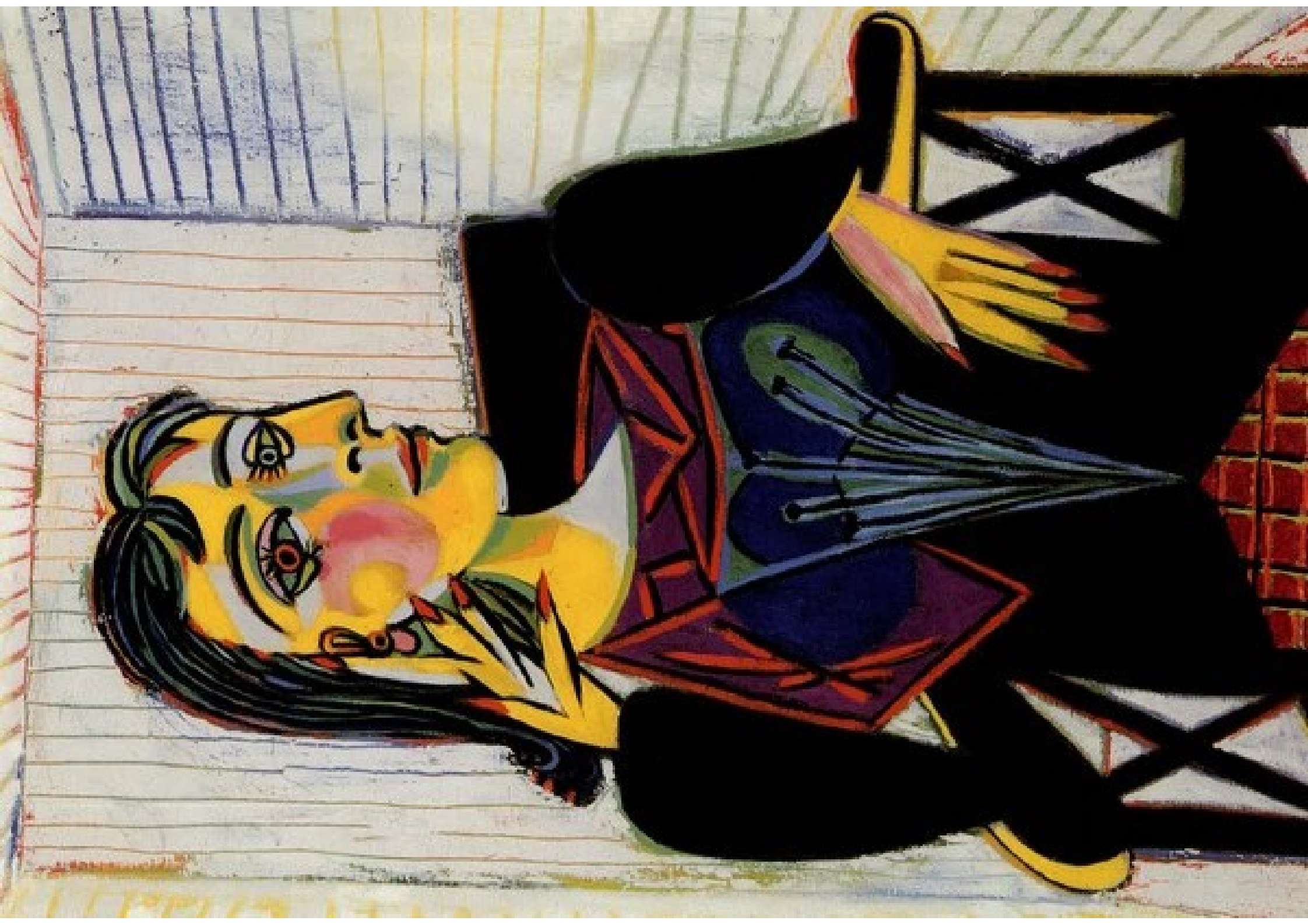


Dr. Ziemann

















Van gogh
"Autoportrait devant le chevalet"